

Installation Manual For



**Next Generation controller
For Reason Studios
Windows Version**

Installation Overview

Installation of JQD Mirror Mixer mode can be divided into 6 steps as follows, tasks for the computer hosting Reason are in **blue**, Tasks for the touch device are written in **green**.

If you already installed the demo and are installing the full version you only need steps 2, 3 and 4 and 6 (marked with pink asterix (*)).

1. **Installation of TouchOSC Bridge Wifi MIDI utility on the computer that hosts Reason.**
2. **Installation of Mirror MIDI Maps and Codecs for Reason. (*)**
3. **Configure Reason Preferences and Lock JQD Mirror to the SSL mixer. (*)**
4. **Upload template files to Google drive or iCloud based on if your device is Android or iOS. (*)**
5. **Installation and configuration of Hexler TouchOSC on the touch screen device that will host Mirror.**
6. **Importing and activating the Mirror Mixer Mode template into the remote device. (*)**

The entire process should only take a few minutes.

File names in the screenshots may include the word “demo” or “beta” - the full installer will have the similar filenames without “demo” or “beta”.

A video version of this guide is included in the zip file as well or linked on youtube: <https://youtu.be/Lpg--FPpatg>

Written instructions begin on the following page.

Step 1 - Installation of TouchOSC Bridge on the machine with Reason:

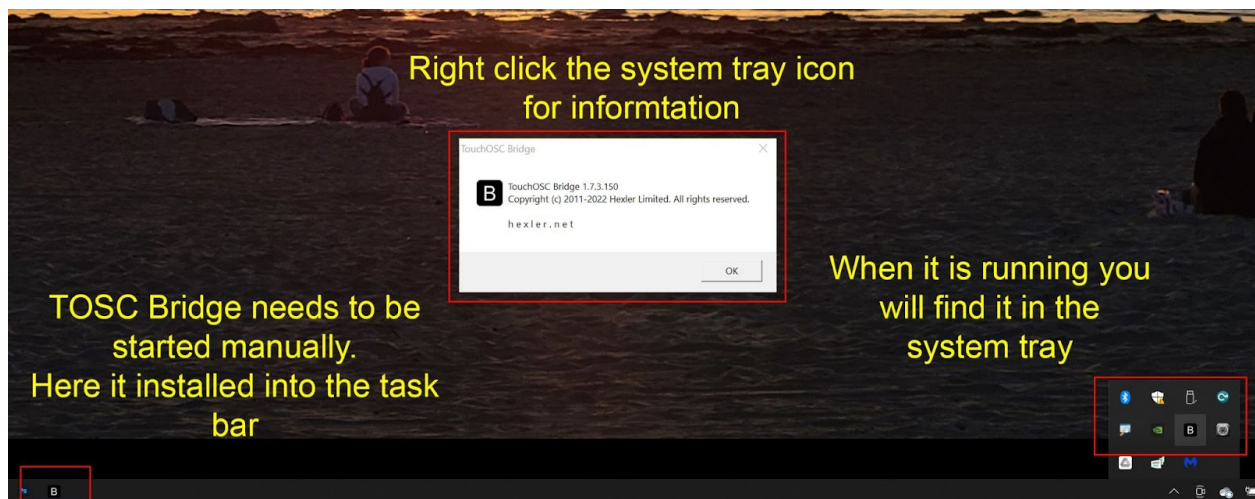
Hexler Bridge is a free application that creates network MIDI ports which can be discovered on any device which resides on the network and allows JDQ Mirror to connect with Reason. Bridge should be installed on the computer that runs Reason.

It is available for download here

<https://hexler.net/touchosc/#resources>

Setup instructions for Bridge are available here. There is nothing to configure. Simply download and install.

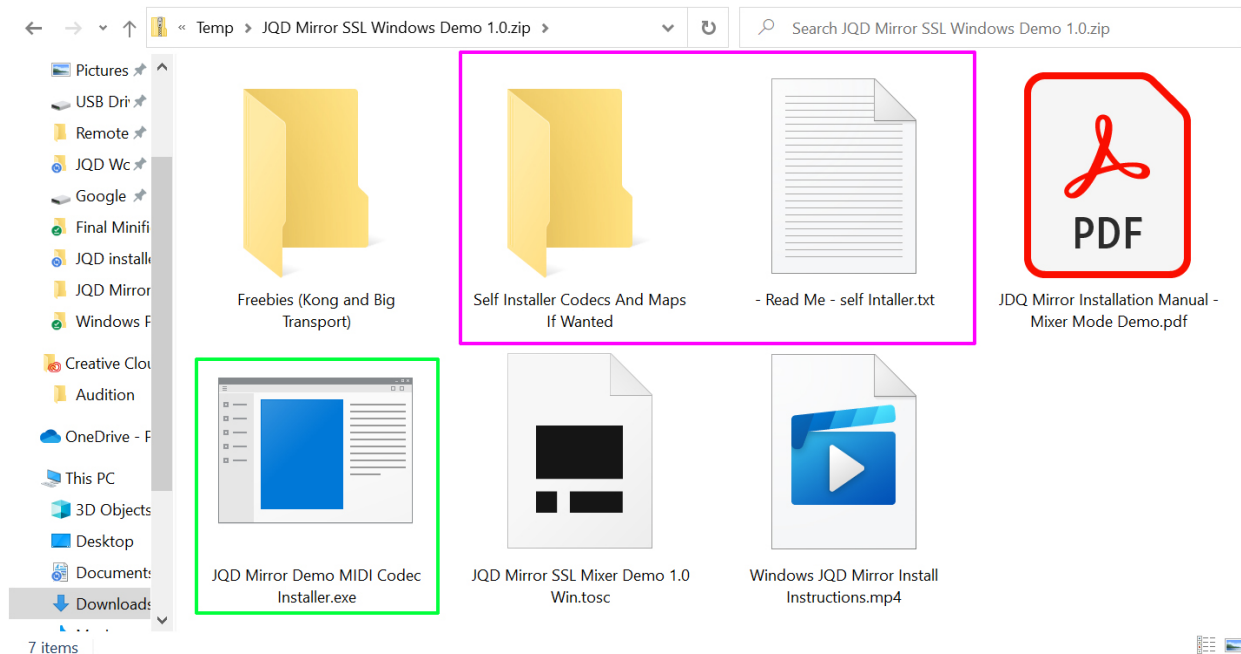
<https://hexler.net/touchosc-mk1/manual/configuration-connections-bridge>



Important! Bridge needs to be started **every time you restart your computer**. This has been the #1 troubleshooting issue when Mirror doesn't connect to Reason. You can add it to your taskbar to make this more memorable.

Setup instructions continue on next page.

Step 2: Installation of Mirror MIDI Maps and Codecs on the Reason host computer.



There are two ways to install the MIDI codecs:

The installer .exe file is signed by me but may give a Windows Defender warning because it has not been downloaded enough. If you would rather copy the files I have provided that easy option “(b)”

- 1) Launch “JQD Mirror MIDI Codec Installer.exe” and walk through the steps. The installer places MIDI codecs where Reason will find them. You will need to restart Reason if it is running when you install.
- 2) Or Copy the files in the folder “Self Installer Codecs” into the directory C:\Users\All Users\Propellerhead Software (detailed instructions are in the readme file).

Reason needs to be restarted to see the files.

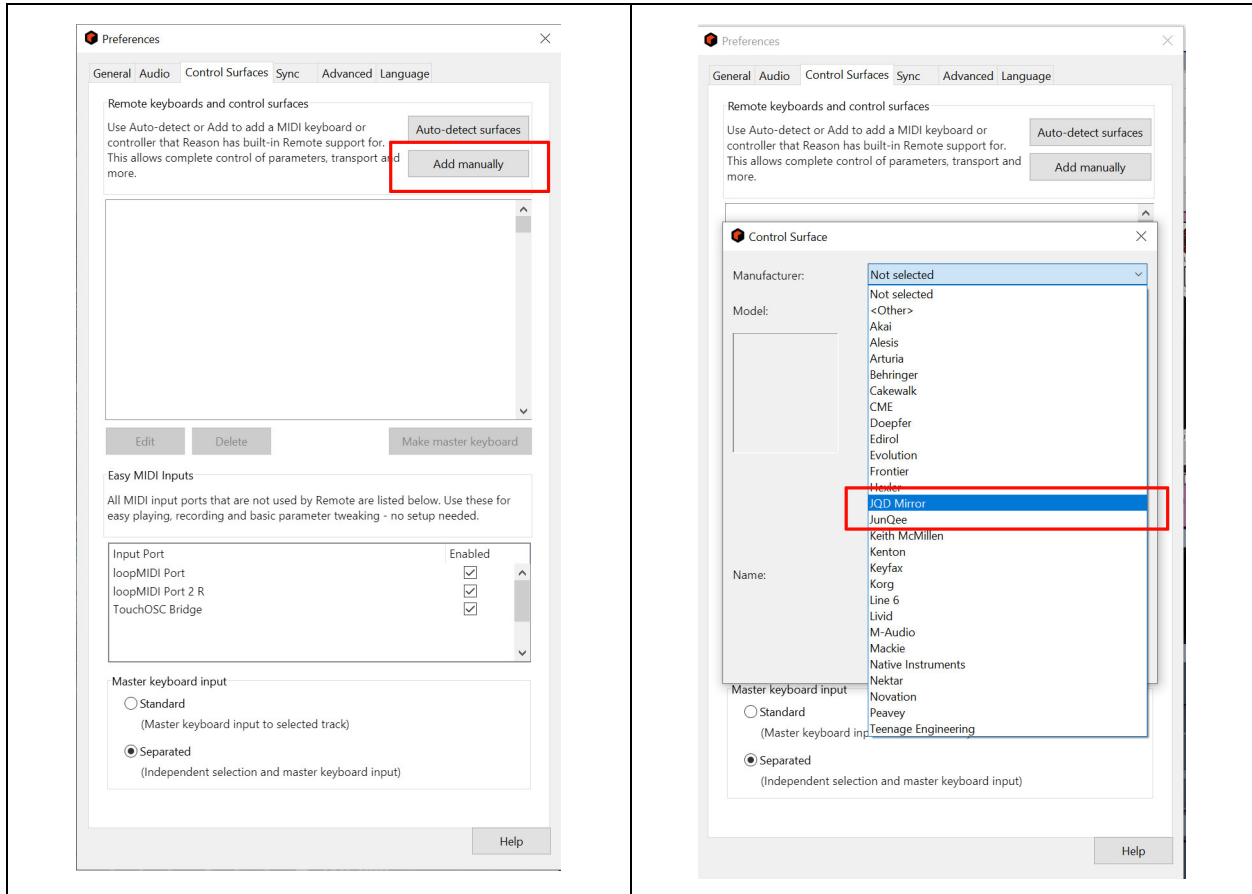
Continued on Next page

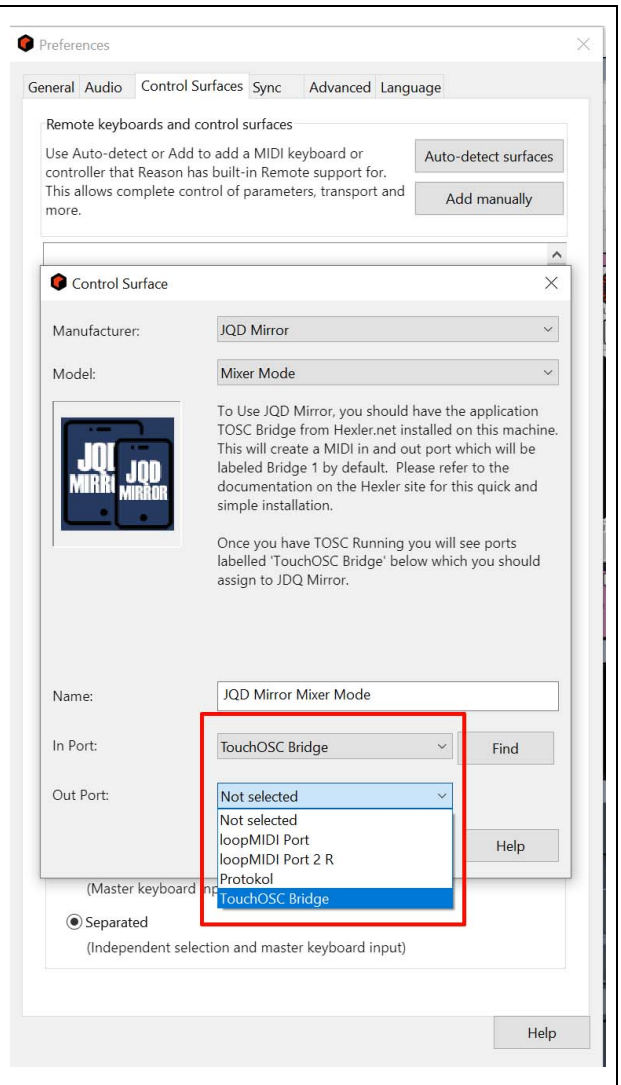
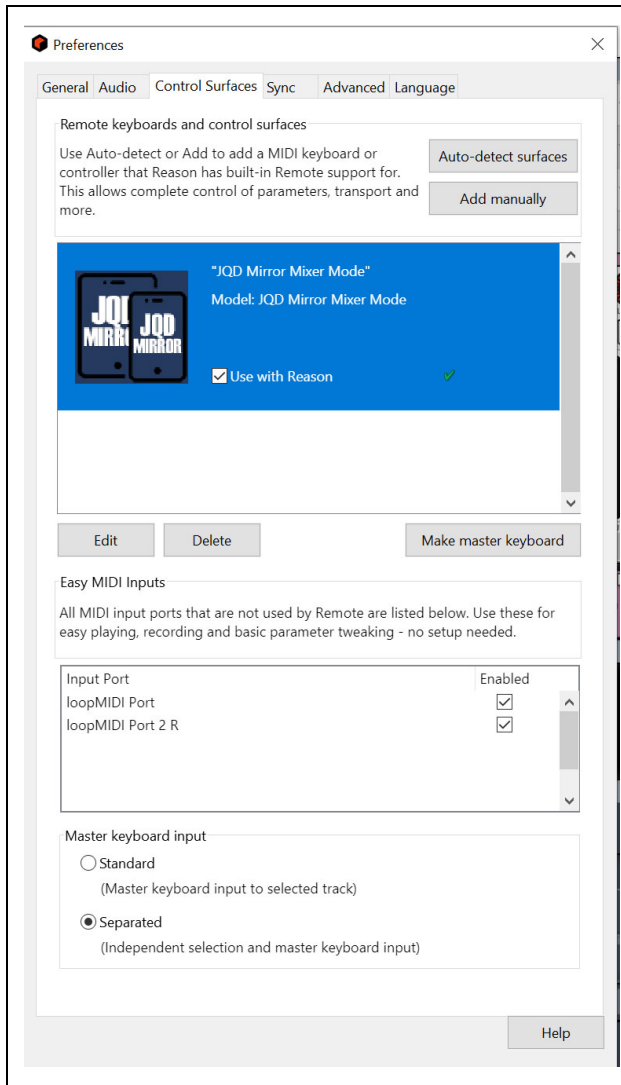
Step 3: Configuring Reason Preferences

Start or restart Reason and navigate to your preferences. JQD Mirror will not appear if Reason was open during the install until you restart.

Open Your Reason Preferences and then:

- Navigate to “Control Surfaces
- Select “Add Manually
- Select “JQD Mirror” from the Manufacturer list
- Select the appropriate model (either “demo” or without if you have the full version of Mirror)
- Select “Touch OSC Bridge” for Input Port
- Select “Touch OSC Bridge” for Input Port
- **JQD Mirror should not be set as master Keyboard.**
- Exit Preferences

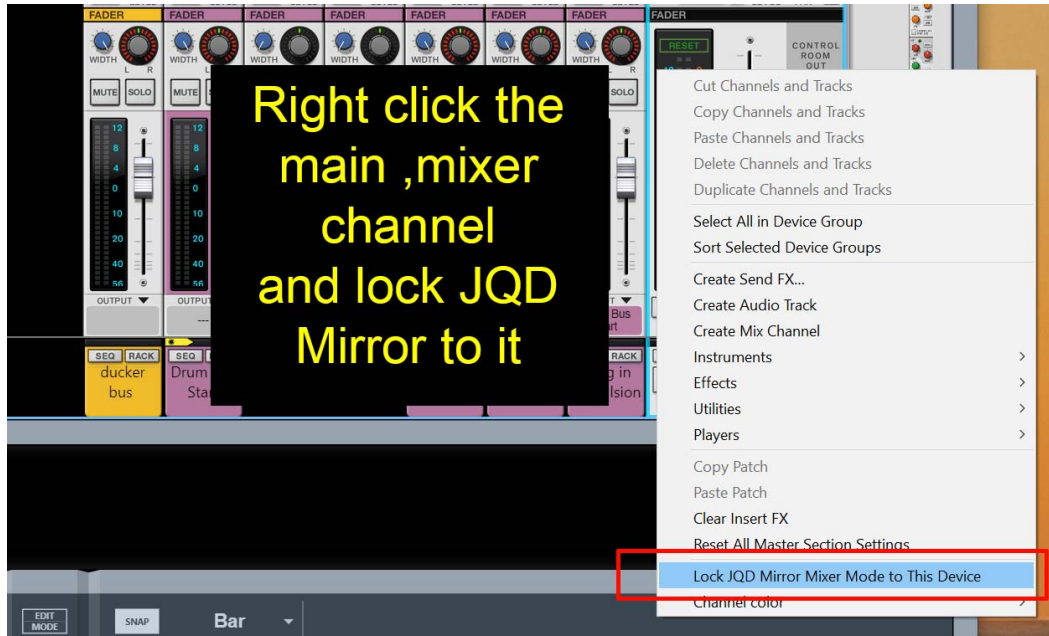




Continued on Next page

Step 4 - Lock the JQD Mirror to the SSL Master Channel in Reason.

JQD Mirror needs to be locked to the main mixer each time a new song that was not saved with it locked. Right click on the master strip in any area that is not a controller and look for “Lock JQD” at the bottom of the right click menu.

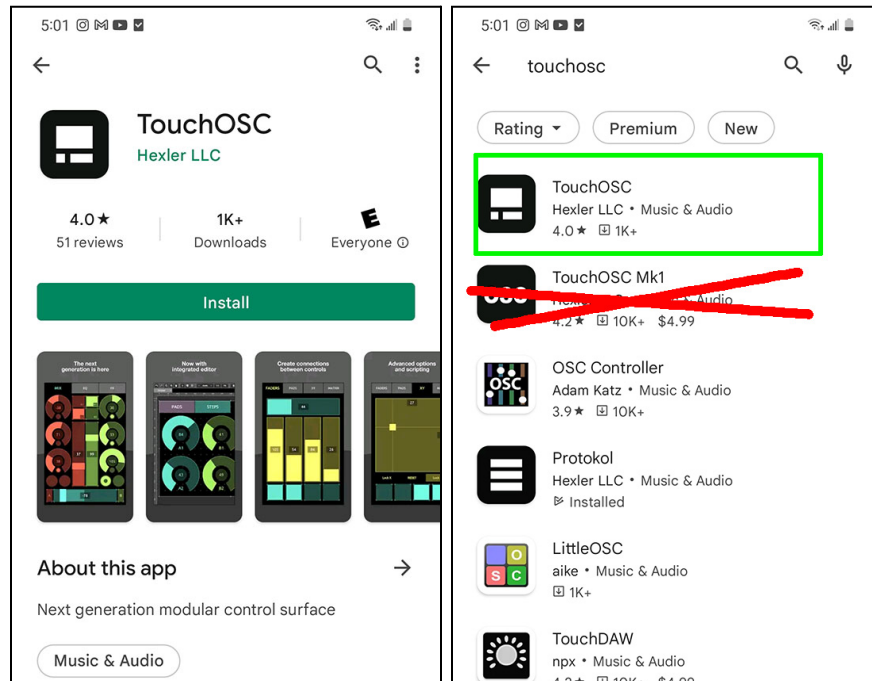


Continued on Next page

Step 5: Installation of TouchOSC on the Mirror device (tablet or mobile):

Search for **TouchOSC** in the Play Store or the App Store.

Do not choose “TouchOSC Mk1” - This is a legacy app and will not work with Mirror.
Purchase and install.



Configure TouchOSC on your device to connect to TOSCBridge on your PC

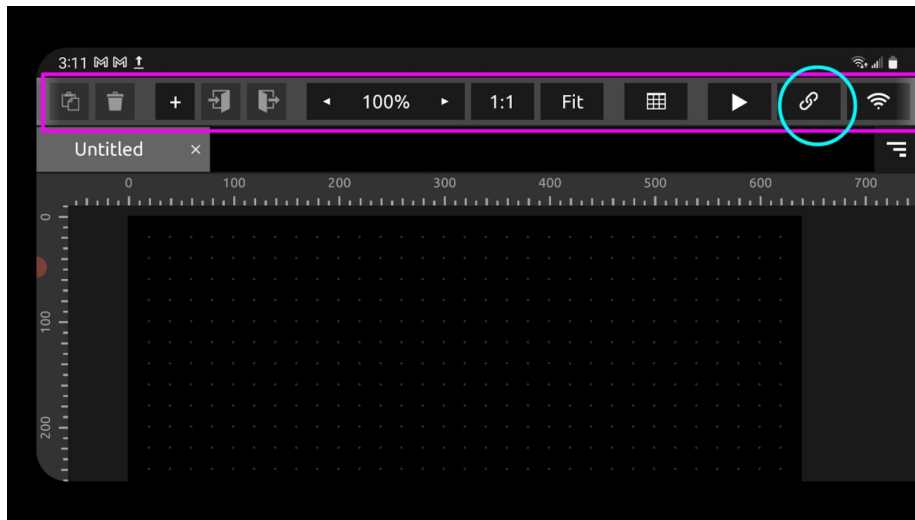
The protocols of MIDI and OSC will now be configured to be able to communicate with Reason. OSC is used to control keyboard shortcuts.

Note: Navigating the configuration of TouchOSC app can have slow response and at times can be frustrating. This only seems to occur during initial config and load.

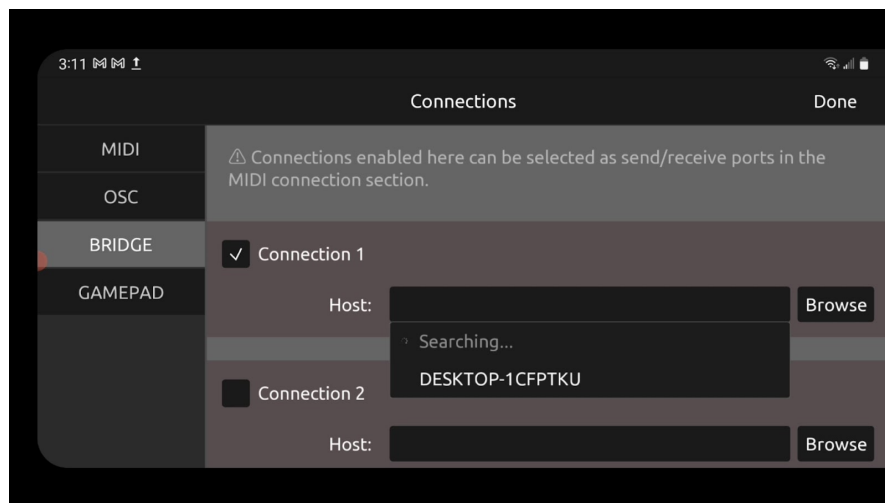
The configuration of Touch OSC is most easily shown with this short video.
<https://www.youtube.com/watch?v=9ZrS7UPCxuE>

Alternatively, instructions with screenshots begins on the next page ->

Open Touch OSC, slide the top navigation to expose the icon that looks like a link.

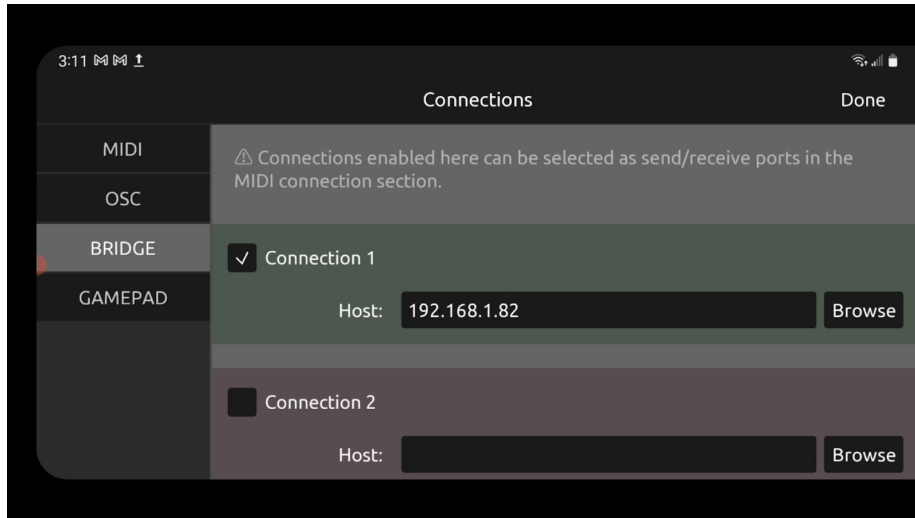


Select "BRIDGE" on the left. Enable connection #1, hit browse and find your computer.

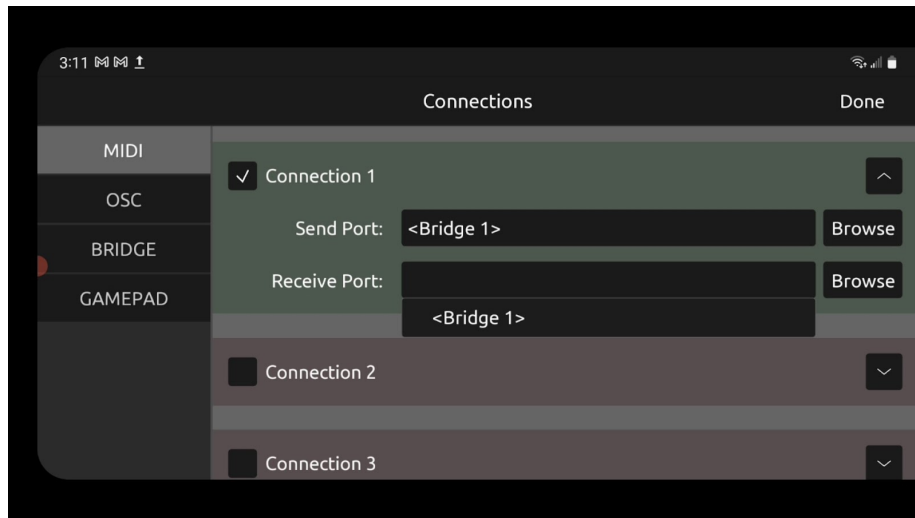


Continued on next page

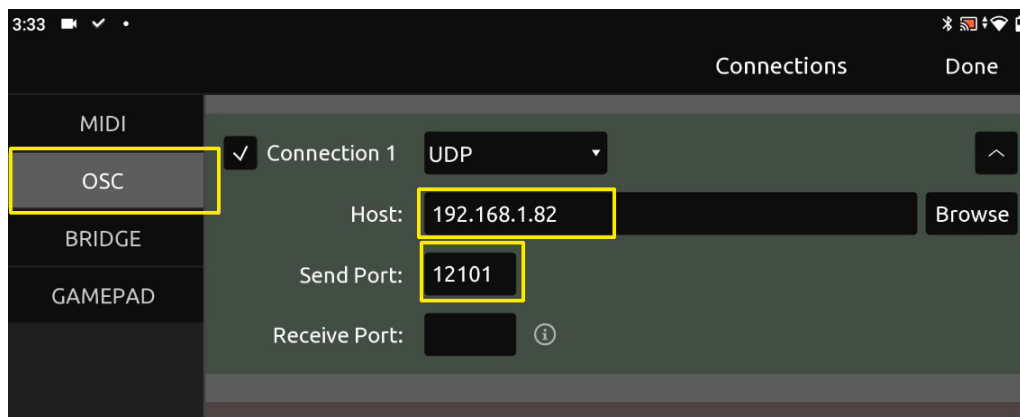
Your IP should appear and the box turns green



Navigate to the "MIDI" tab and set both in and out ports to "<bridge1>"

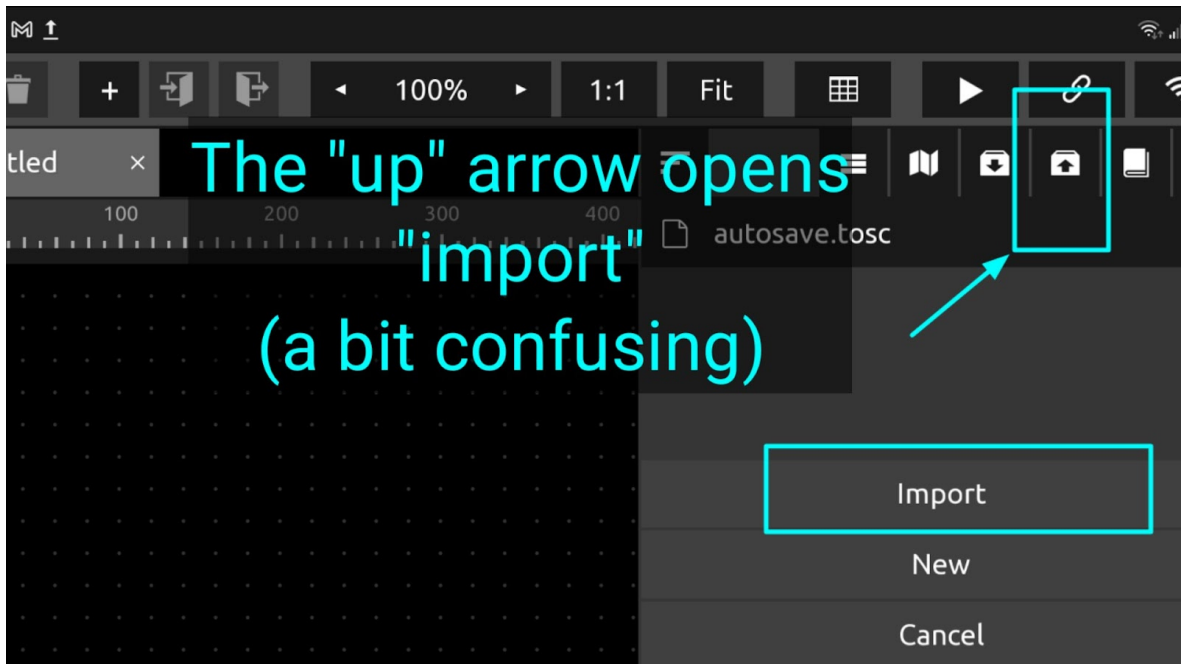
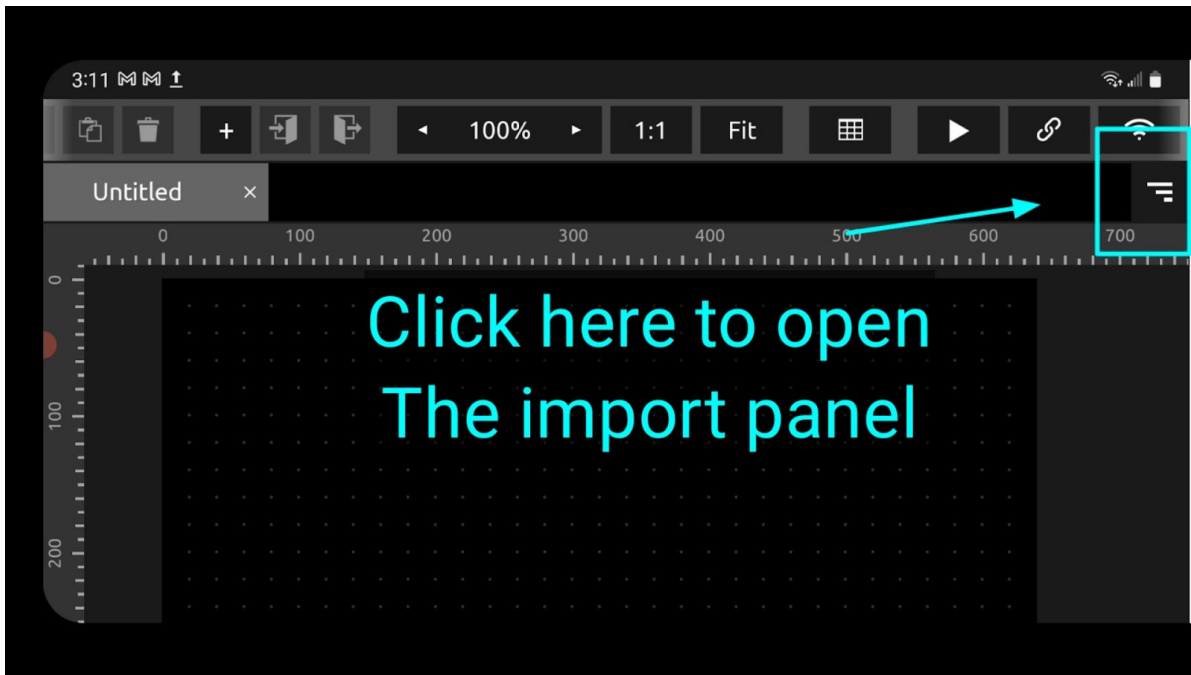


Navigate to "OSC". Enter your IP and Send Port 12101

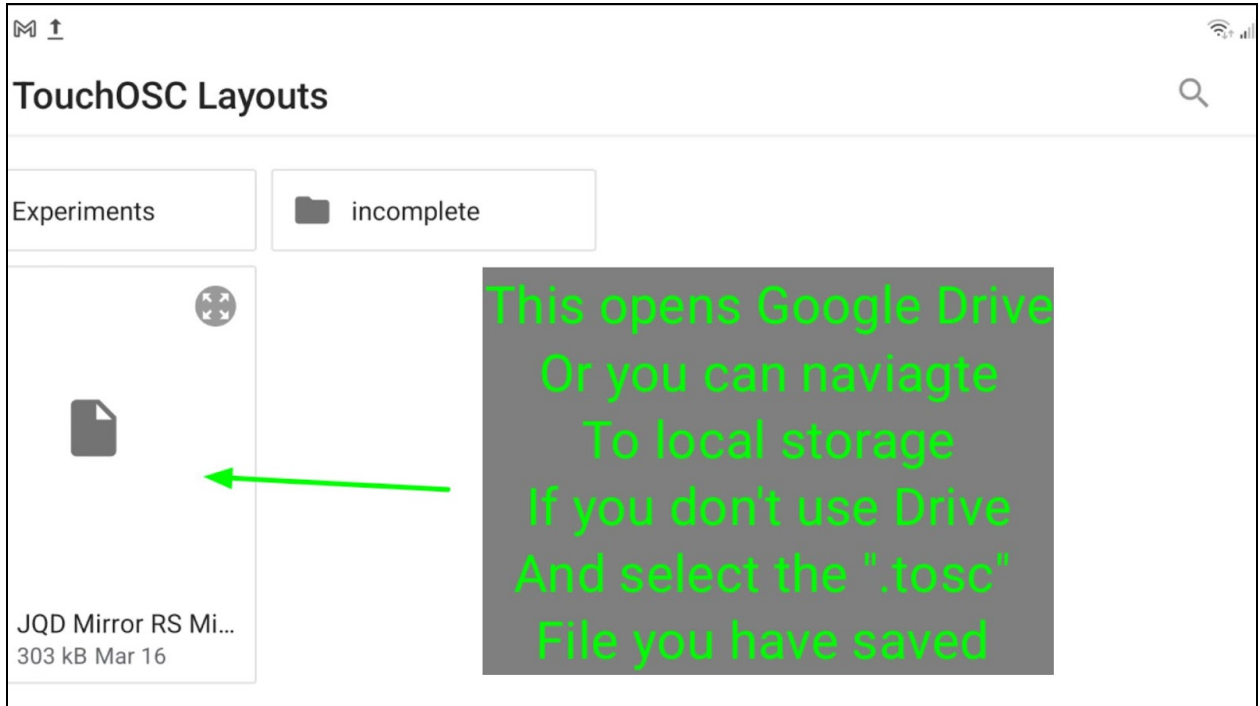


Step 6: import and activate the Mirror SSL template into the remote device.

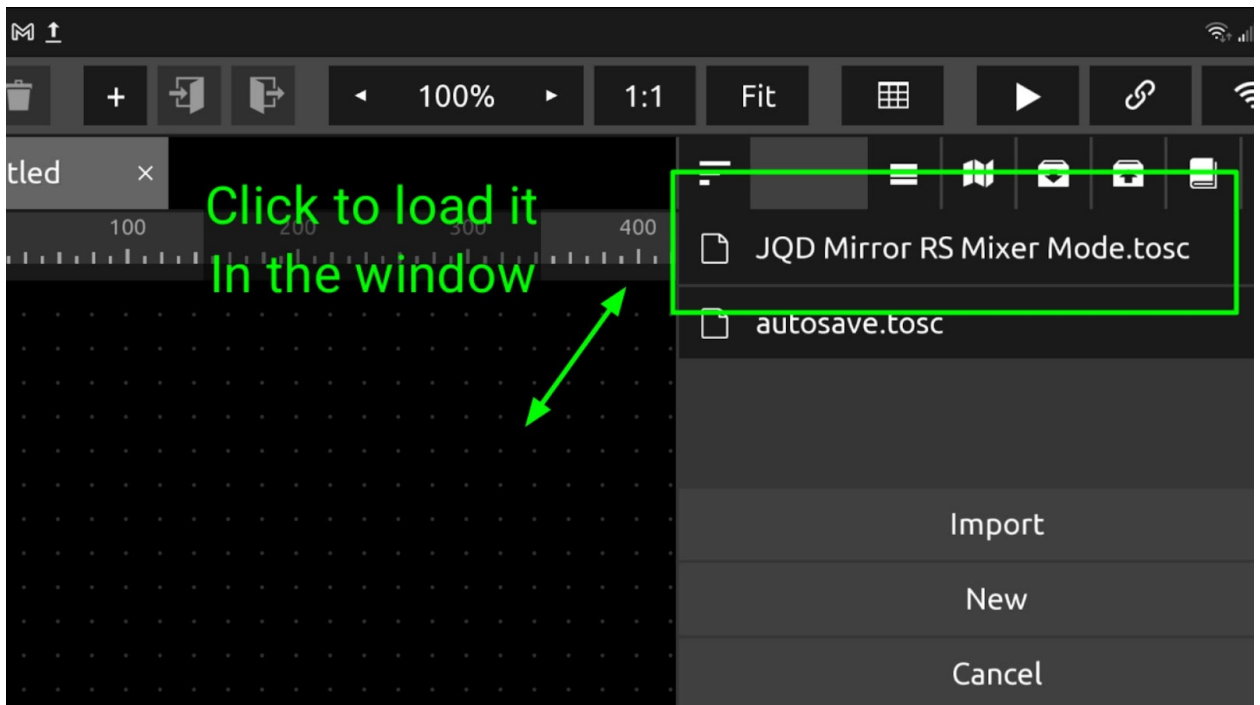
The screenshots below are from the app TouchOSC on Android but the interface is essentially the same on iOS.

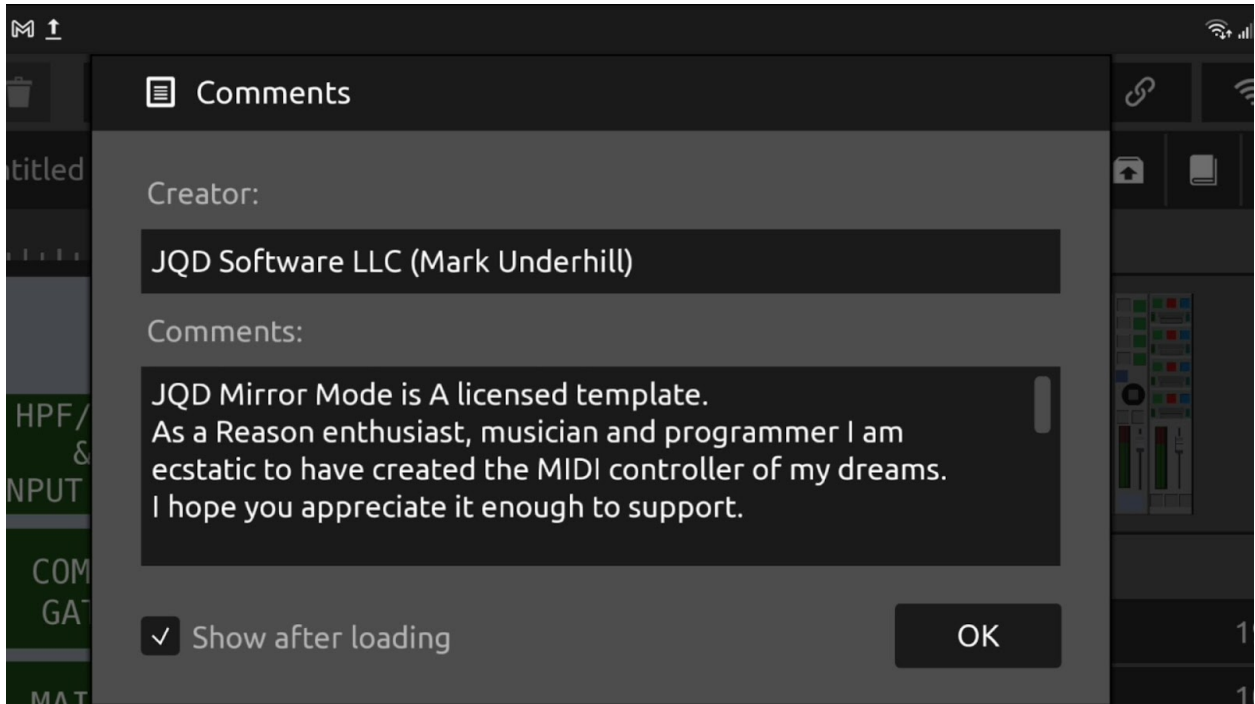


Clicking this will open a file browser which defaults to Google Drive or Apple Cloud but also allows you to navigate to local storage if you save a template to local memory.

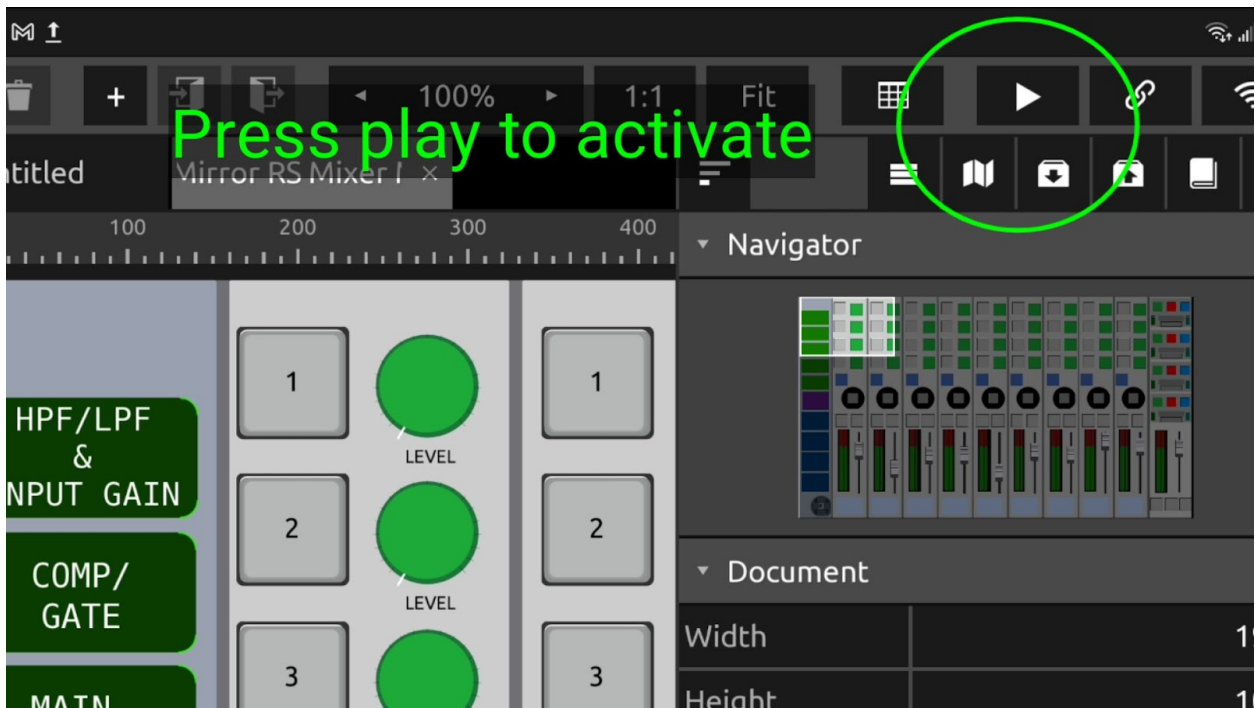


Click on the ".tosc" file which you downloaded to import it to TOSC, it will appear in this list. It is now on the phone until you delete it.





Click OK to agree





If Reason is already locked to Mirror the mixer channels should populate with your channel names. If you are having problems here are some troubleshooting tips.

Troubleshooting quick checks. These are the most common spots for problems.

- If the channel names don't populate, first try shifting channels to the right using the blue button in the left column in Mirror.
- Double check that the Main Mixer is locked to JQD Mirror.
- Make sure that Bridge is running by checking for the "B" Icon in the top of the mac. If it's not running, find it in your aps and start it.
- Make sure that JQD Mirror is not set to Master keyboard in your preferences.
- Make sure that both devices are still on the same network and that you can still see your Mac in the TouchOSC network settings.
- You can only use Mirror on one device at a time and if the app is running on two devices on the network it will cause conflict and won't run properly. The license allows you to load Mirror on more than one device (a tablet and a phone for example), however, you need to make sure to entirely quit out of the Touch OSC app before trying to use the other one.

Additionally you can check our website <https://jqdmirror.com/troubleshooting>

Very quick walkthrough of layout.

Mirror is hopefully intuitive but here are a few basics (without screenshots at the moment)

- The buttons on the left column are the controls that change what you see on mirror. Everything to the right controls the SSL mapped as it appears
- Multi channel mode is default. This shows 9 channels. They can be shifted left or right either one at a time or groups of 8.
- The round handle on the left side of the transport allows for drag positioning and if you double tap the circle it will hide the transport.
- The green buttons change the top half of the mixer into groups as labeled (fx 1-4,5-8,EQ, comp, and filters accordingly).
- The area above the main out will either show the main compressor or the main effect send and return based on the selected group from above.
- Single Channel mode allows you larger controls with all controls on one screen.
- In single channel mode you can select channels using the popout menu. You need to hit the “refresh channels” when you first load and/or when you add new channels in Reason.
- If you return to Multi Channel mode the farthest left channel will be the one you had open in single channel mode.
- Up to 60 channels will load.
- Use Single Channel mode to navigate far away channels.

Please refer to the website for more information